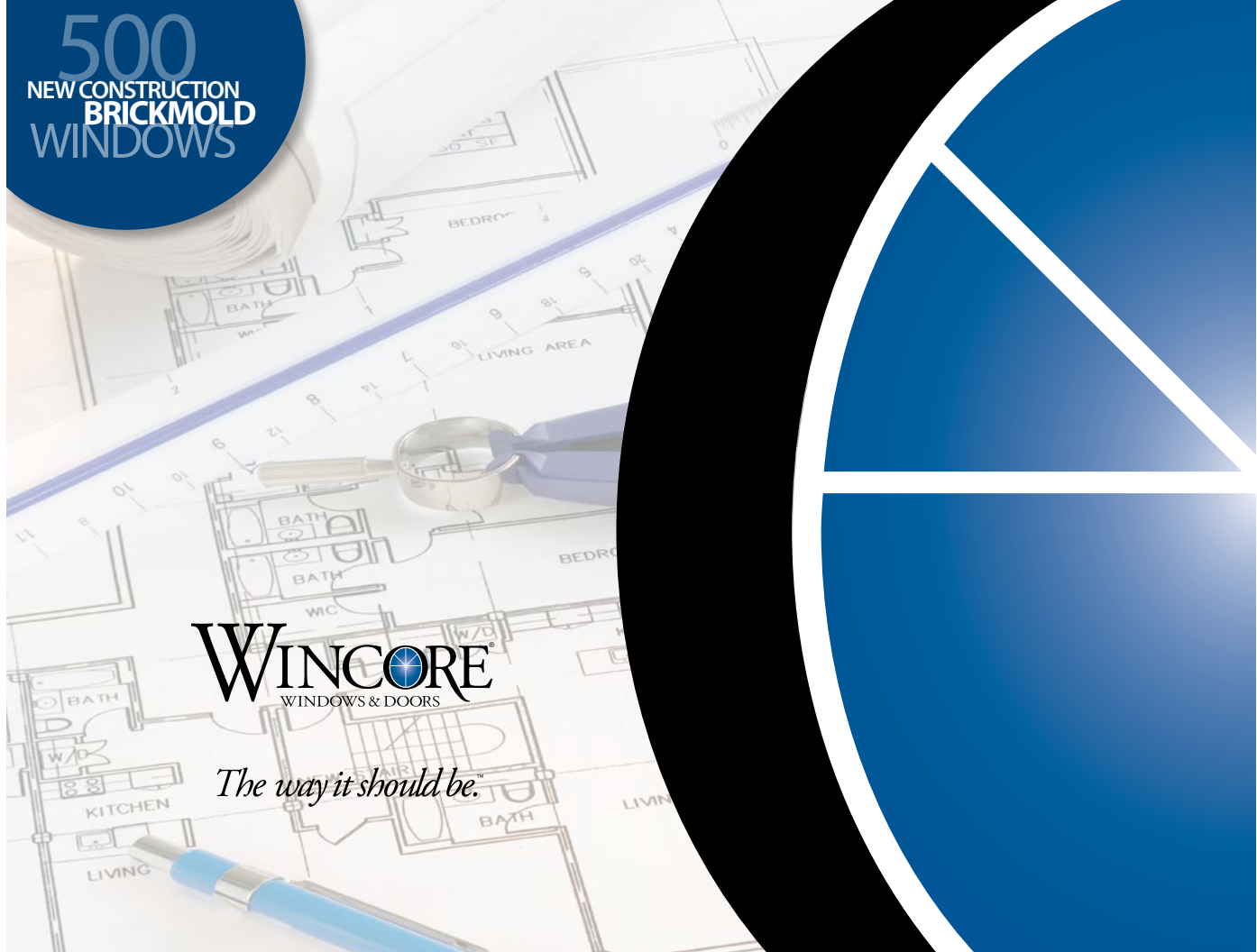


500
NEW CONSTRUCTION
BRICKMOLD
WINDOWS



WINCORE
WINDOWS & DOORS

The way it should be.™

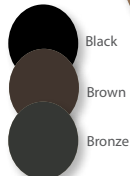
500
NEW CONSTRUCTION
BRICKMOLD
WINDOWS

On a new construction project, there are a million things that can slow you down. That's why we work so hard to speed you up.

When it comes to new construction projects, time is definitely money. Which is where Wincore® 500 Series new construction windows come in. The brickmold frame design with an integral J-channel means no additional accessories and no additional labor time on homes with brick exteriors. For homes with exterior siding, the integral J-channel makes everything neat and tidy. And the best part is, Wincore's® outstanding quality and dependable delivery schedules mean you'll get just what you need, just when you need it.



Interior Colors **Exterior Laminate Colors**



The brickmold frame design with an integral J-channel helps make a fast, easy and smooth transition between the window and the exterior of the home — saving time and unnecessary labor costs that would be required if the brickmold and J-channel were add-on accessories.

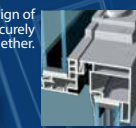
Black, Brown and Bronze Exterior Laminates require a three week lead time.





The U-channel spacer system, more efficient than conventional spacers, moderates outside air before it hits the inside sash.

Interlocking design of the meeting rail securely fastens sash together.

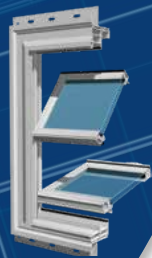


On Double Hung windows, sash slide easily up or down due to a constant force coil spring balance system.



Double Hung windows have an easy-to-use vent latch for partial ventilation.

Double Hung windows feature a homeowner favorite — sash that tilt in for easy cleaning.



Wincore® Series 500 windows are more energy efficient with optional Low E glass and an Argon gas-filled insulating glass unit. This helps to improve efficiency by keeping homes warmer in winter months and cooler in the summer months — very important to every homeowner.



Features

- 1 Brickmold frame with an integral J-channel seamlessly fits with both brick and siding exteriors.
- 2 Dual-paned glass unit can be ordered with optional Low E glass and an Argon gas fill to maximize energy efficiency.
- 3 Insulated glass unit is set 1/2" into the sash to keep edges warmer.
- 4 Frames and sash, welded at the corners, create strong, effective units.
- 5 The sloped sill design prevents rainwater from pooling during storms.
- 6 Weatherseals placed at key points around each sash increase efficiency by reducing air flow.
- 7 Closed-cell foam sill bulb on Double Hung windows blocks air and water infiltration at the sill.



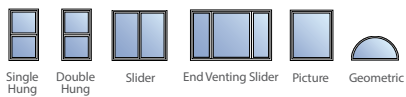
To assist with quick installation, Series 500 windows are available with wood or Quick Trim™ cellular pvc jamb extensions. Choose either 4-9/16" or 6-9/16" construction.

Grids

Optional grids, available in three patterns, are located inside the insulating glass unit for a smooth, easy-to-clean surface.

		Colonial		
White	Tan			

Window Styles



Behold the power of collective thinking.

In this business, everyone knows that great people working together end up providing great windows and doors. That's why when we set out to design and build the best windows and doors in the industry, we focused on people first. People with advanced technical knowledge. People that know how to do things right the first time. But most importantly, people who realize that integrity and trust are not simply words, but a way of life. With more than 200 years of combined experience under our belts, you can clearly see our promise of quality and innovation in every window and door we make. Not to mention how we go about making them. To us, it's about creating an environment that brings out the best in everyone, and accepts nothing less. It's about doing things the way they should be done, not necessarily the way they've always been done. It's about giving back to our communities and the things that matter most. And it's about family — ours, as well as yours. At Wincore®, our philosophy is simple. It's not about being the biggest. It's about being the best. Because to us, that's the way it should be.



250 Staunton Turnpike, Parkersburg, WV 26104
1-866-WINCORE www.wincorewindows.com



Proud to support breast cancer research. Full details available at www.wincorewindows.com



wincorewindows.com/fb

@wincorewindows

The information is correct at the time of printing. Changes to the product(s) may have occurred since time of printing. Not all product styles and/or options are available in all areas, so please consult your sales representative prior to purchasing. Wincore® is a registered trademark and The way it should be.™ is a trademark of Wincore Window Company, LLC. Tough Enough to Wear Pink is a licensed trademark of Terry Wheatley and is used by permission. Intercept® is a registered trademark of PPG Industries, Inc. Printed in U.S.A. ©2014 Wincore Windows and Doors. All rights reserved.

Warranty coverage does not extend to problems caused by improper installation. Warranty issues must first be investigated by your installation contractor. See printed warranty brochure supplied at installation for complete details or visit www.wincorewindows.com.